

## Adjusting Pop-up Blocker Settings in Mozilla Firefox on a Windows PC

### Why do I need to adjust Pop-up Blocker?

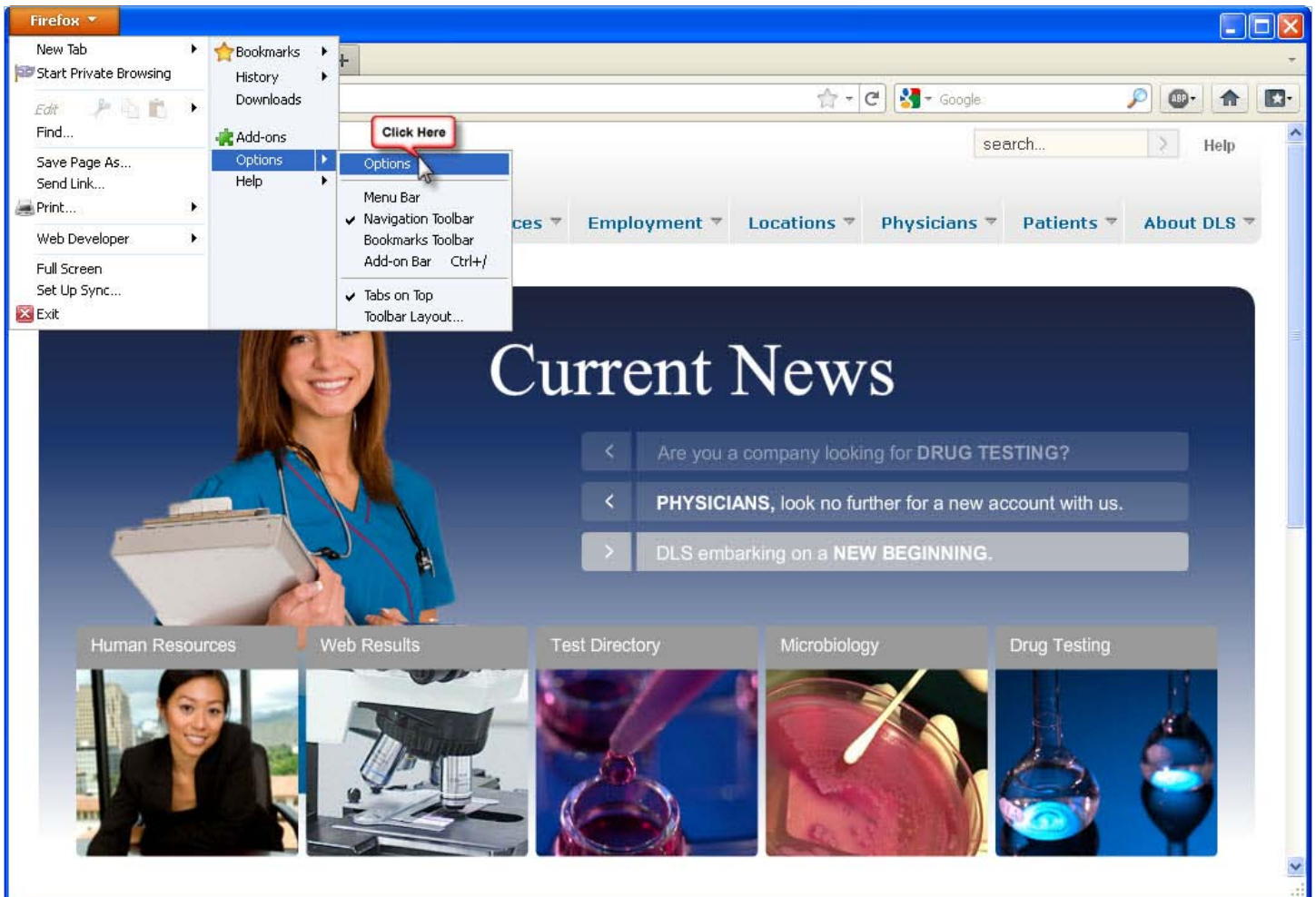
Pop-up Blocker needs to be adjusted to properly display the log-in screen.

### Requirements:

Windows based PC or laptop (Windows 7, Windows Vista, Windows XP) running Mozilla Firefox version 4 or higher.

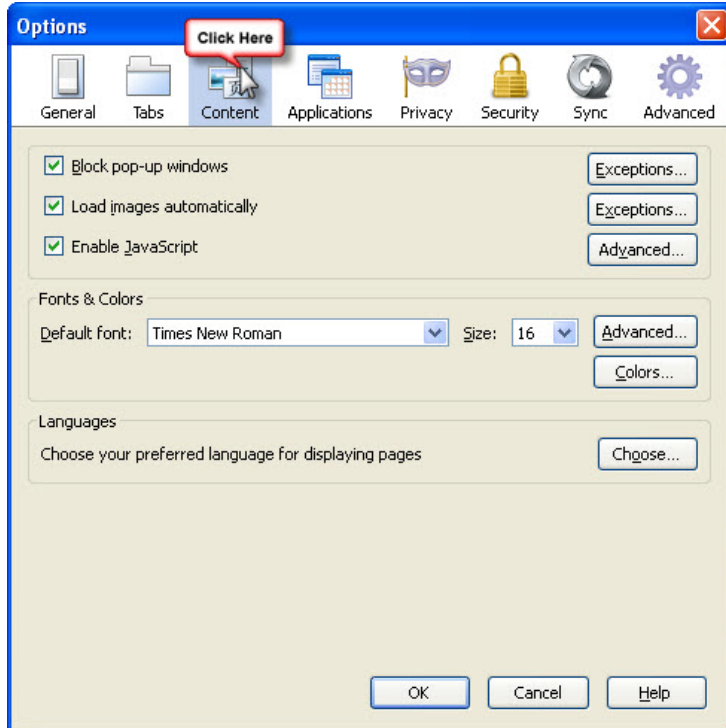
\*Screenshots may vary depending on version of Windows and/or Firefox.

1. Open Firefox
2. Click "Firefox" on the top left of the screen
3. Click on "Options" then "Options".

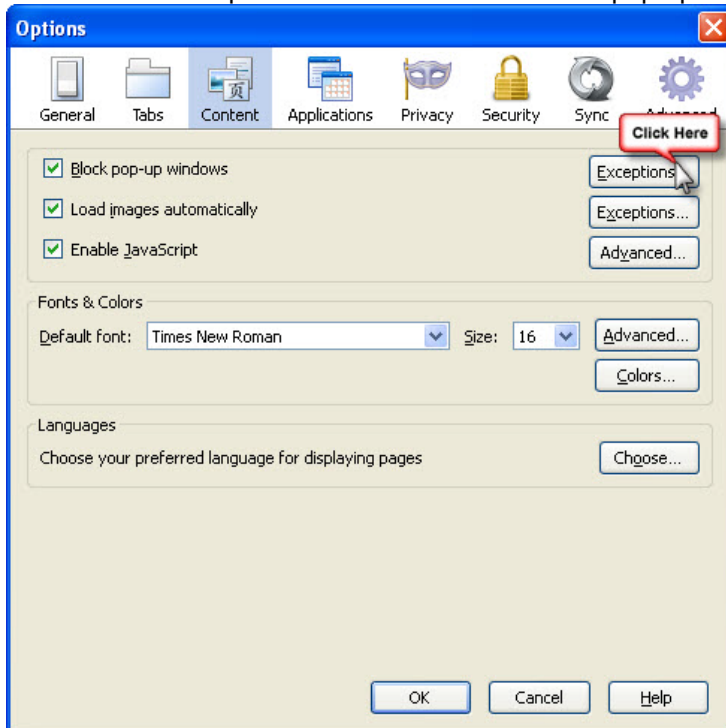


## Adjusting Pop-up Blocker Settings in Mozilla Firefox on a Windows PC

4. Click on the "Content" tab

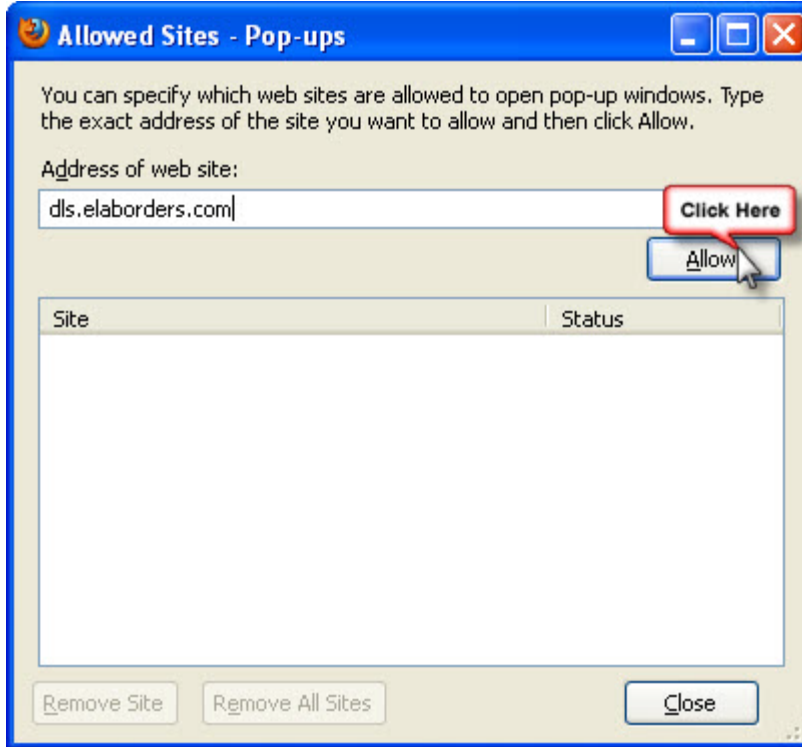


5. Click on the "Exceptions" button next to the "Block pop-up windows" menu item.



## Adjusting Pop-up Blocker Settings in Mozilla Firefox on a Windows PC

6. Type `dls.elaborders.com` into the "Address of web site:" box then click "Allow"



7. Close all open dialogue boxes.